

TRAUMA PREVENTION INITIATIVE (TPI) IMPACT REPORT: 2015-2019

SOUTH LOS ANGELES



TPI is a comprehensive, place-based initiative that seeks to reduce community violence through innovative strategies and collaborations that empower communities and advance systems change. TPI was established in 2015 and funded strategies began in 2016 in unincorporated communities of South Los Angeles with the highest disparities in violence and other health and social inequities, including: **Westmont West Athens, Willowbrook, Florence Firestone and unincorporated Compton.** This report includes highlights from TPI's early efforts from 2015-2019. A detailed report can be found on our website.



TPI invests in three key areas: **1) Intervention**, using a peer approach to break the cycle of violence in hospital and community settings; **2) Prevention** infrastructure, facilitating community dialogue and decision making, and funding community identified strategies and; **3) Capacity building**, providing technical assistance for grassroots organizations and multidisciplinary training opportunities.

TPI MILESTONES



Decreased Violent Crimes

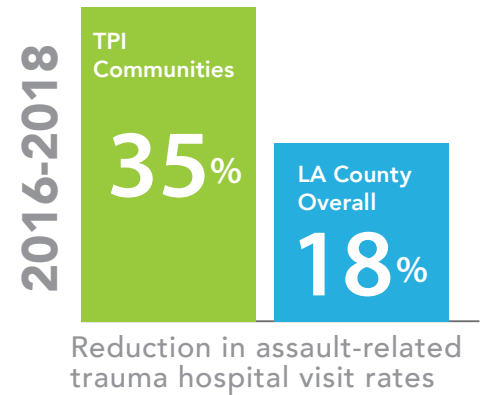
Overall, among the four communities, violent crimes peaked from 2016 to 2017, the first year of Hospital Violence Intervention Program implementation, and the year before Street Outreach implementation. **Between 2016 and 2019, violent crimes in 3 communities declined**, showing promising early results for implementation of these strategies.

Intervention

TPI invests in a peer approach that employs credible messengers to address the immediacy of violence, promote peace and enable prevention strategies to take root.

Hospital Violence Intervention Program (HVIP)

Between 2016 and 2018, year two of HVIP implementation, TPI communities saw a 35% reduction in assault-related trauma hospital visit rates, compared to a 18% reduction in LA County overall; and reduced their burden of countywide assault-related trauma hospital visits from 5% to 4%. HVIP Clients received case management services including referrals to counseling, employment, housing, substance use treatment, and victim compensation.



Southern California Crossroads provided HVIP services at St. Francis and Harbor UCLA Medical Centers beginning in 2017.

318
clients received case management services

692
victims of violence were engaged

Street Outreach & Community Violence Intervention Services

In 2019, TPI staff worked with agencies to finalize an app to track activities in the field. Between July and December 2019, agencies conducted more than 2,187 activities to meet the unique needs of each of the four South LA communities, including:

1014

safe passages activities at parks and schools

424

engagements with community partners to promote peace

116

relationship building activities

697

youth served for mentoring, sports, and life skill activities

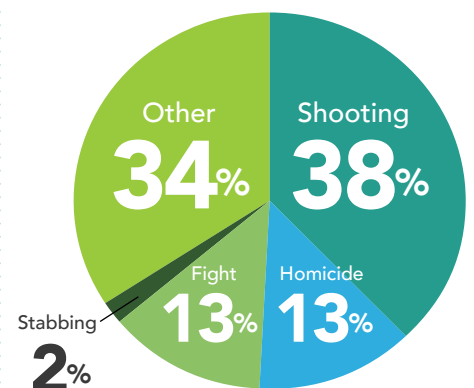
280

conflict resolution activities

108

community building events

Street Outreach agencies responded to:



A total of 47 incidents

Capacity Building

TPI provides technical assistance to help strengthen grassroots organizations and funds multi-disciplinary trainings for community partners to promote collaboration and healing.

TPI launched a pilot Training and Technical Assistance (TTA) project in 2017 to build the organizational capacity of grassroots organizations providing violence prevention and intervention services in TPI communities. In 2019, TPI secured funding from the Probation Department to expand the pilot program to provide workshops countywide.



Multi-disciplinary Trainings

10 multi-disciplinary trainings

120 local community leaders & partners

TPI hosted multi-disciplinary trainings to build the capacity of local community leaders and partners:

- Group facilitation and decision making
- Community Resilience Model
- Mental Health First Aid and Resilience
- Gang Intervention Awareness for Deputy Sheriffs

TPI contracted with the **Human Relations Commission in 2018** to build capacity of community partners across all 4 TPI communities:

100 

Total participants in Youth Development training sessions

58 

Total participants in Conflict Mediation and Implicit Bias training sessions

Prevention

TPI invests in community leadership and empowerment, leverages parks as community hubs for innovative programming, and advances community priorities such as healing arts.

Community Empowerment

Community Action for Peace (CAP) groups in Westmont West Athens and Willowbrook engaged stakeholders to build collaboration and develop strategies to promote peace and well-being.



Willowbrook CAP Priorities

- Fatherhood support
- Trainings and resources for healing
- Increase knowledge of services resources
- Increase Latinx resident membership



Westmont West Athens CAP Priorities

- Community dialogue and healing
- Intergenerational mentoring
- Foster care and out-of-school youth leadership skills and employment
- Employment opportunities for re-entry population

400
stakeholders engaged



representing
150
grassroot organizations

5
community summits convened



850
attendees in total

Park Therapy Pilot Program

TPI developed the Park Therapy pilot program in 2017 in partnership with the Department of Mental Health to use non-traditional approaches to provide a safe space for residents to explore mental health services at 5 county parks in South LA. This program has engaged 777 children, youth and families to date.

Helped fund the expansion of Parks After Dark (PAD) to:

10



Parks in TPI communities
representing nearly half of total PAD park visits in 2019

Healing Arts

TPI contracted with the **Department of Arts in Culture** in 2018 to engage:

10
Community-Based arts organizations



28
local artists in art-based healing engagement



500+
community members



4
local artworks created

